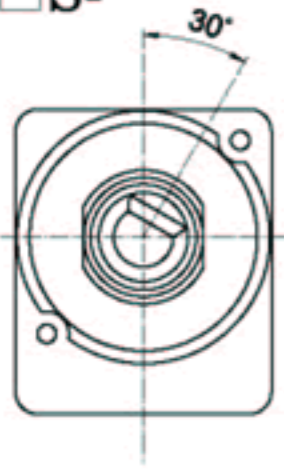
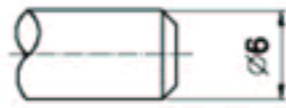
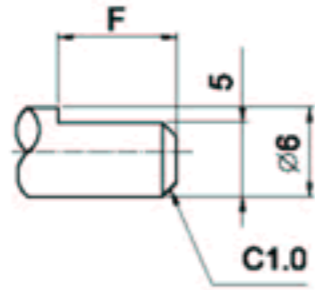


Type of shaft: 軸的型式

R16R□S-



shaft shown in full C.C.W. position



F TYPE:

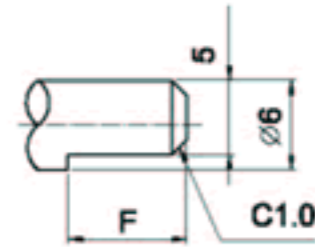
X	1	2
L	17	19
F	8	8

S TYPE:

X	4
L	19



shaft shown in full C.C.W. position

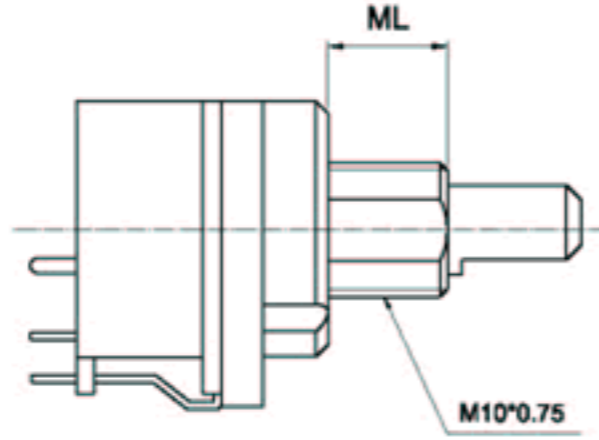


F TYPE:

X	M
L	19
F	8

Brevity code:

R16□□S-
VW



V	P	R
Switch Operation	Push	Rotary

W	1	2	3	4	5	6
Shaft Materials	BRASS	PLASTIC	BRASS	PLASTIC	BRASS	PLASTIC
ML	8	8	9	9	10.5	10.5

Mechanical characteristics: 機械的性能

R16P□S

R16R□S

Total rotational angle 全迴轉角度	270°±5°	300°±5°
Rotational torque 迴轉扭力	10~100 gf.cm	20~200 gf.cm
Rotation stopper strength 止迴轉強度	5 kgf.cm	
Push pull strength 軸推拉強度	8 kgf Max.	
Click position C.C. 位置	0 detent / 16 detent	
Click torque C.C. 扭力	50~150 gf.cm	

Electrical characteristics: 電氣的性能

Total resistance 總阻值	5KΩ ~ 1MΩ
Total resistance tolerance 總阻值容許差	±20% (more than 1MΩ±30%)
Rated power 定格電力	0.2W
Max.operating voltage 最高使用電壓	250VAC , 10A
Withstand voltage 耐電壓	DC 500V (1 minute)
Resistance taper 阻值線性	A , B
Residual resistance 殘留阻值	R ≥ 250K 0.1%max. of total resistance 250KΩ > R > 10K 20Ω max. 10KΩ ≥ R 10Ω max.

Durability: 耐久的性能

Rotational life 迴轉壽命	15,000 cycles
-------------------------	---------------