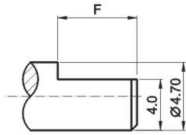
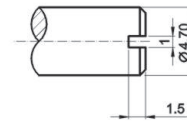


Type of shaft: 軸的型式



F TYPE

X	A	B	C	H	J	F	G
L	15	20	25	10	15	12	18
F	7	12	12	3.5	9	5	9



S TYPE

X	Q	R	S
L	15	20	25

Mechanical characteristics: 機械的性能

Total rotational angle 全迴轉角度	300°±10°
Rotational torque 迴轉扭力	1~8mN.m (10~80 gf-cm)
Rotation stopper strength 止迴轉強度	0.3 N.m (3 kgf-cm)
Click position 段數位置	center
Click torque 段數扭力	2~15mN.m (20~150 gf-cm)
Push pull strength 軸推拉強度	push 50N (5kgf) / pull 30N (3kgf)

Electrical characteristics: 電氣的性能

Total resistance 總阻值	10KΩ~500KΩ
Total resistance tolerance 總阻值容許差	±20%
Rated power 定格電力	curve B:0.05W other curve B:0.025W
Max, operating voltage 最高使用電壓	curve B:50V AC other curve B:25V AC
Resistance taper 阻值線性	A,B,C
Residual resistance 殘留阻值	R>250KΩ 0.1% max. of total resistance 250KΩ > R>10K 20Ω max. 10KΩ > R 10Ω max.
Slide noise 滑動噪音	less than 100mV
Insulation resistance 絕緣抵抗	more than 100M at DC 250V
Gang error 相互偏差	-40~0dB dB≤3dB

Durability: 耐久的性能

Rotational life 迴轉壽命	10,000 cycles
-------------------------	---------------